



BREW HALL

LAS TOWN CENTER

DISTRICT LINE 12



BREW HALL

LAS TOWN CENTER

BREW HALL

LIVE 12



BREW HALL

DALLAS TOWN CENTER

BREW HALL

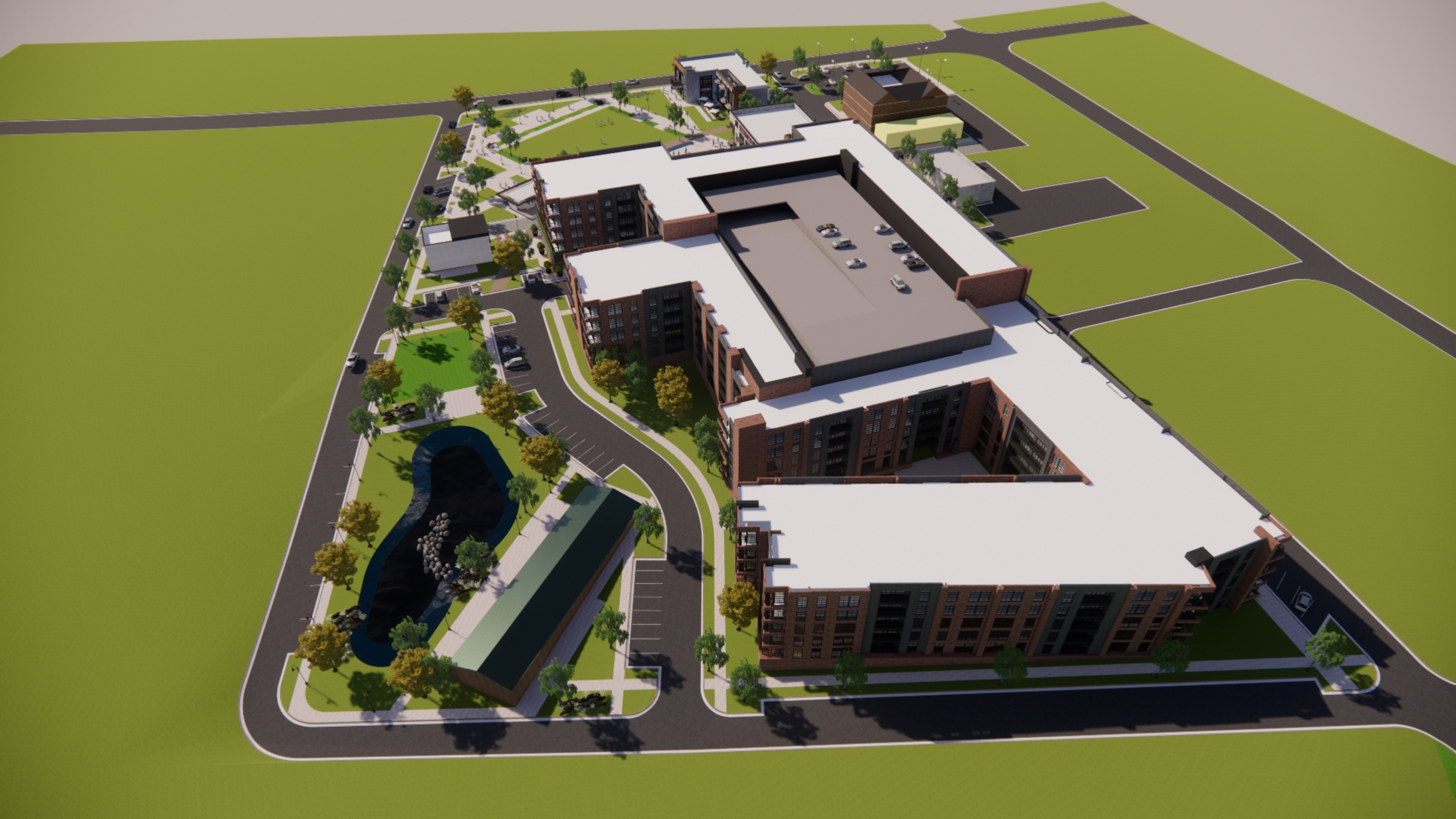
















Town green backs up to West Memorial Drive - allowing for views into activity

Area for permanent or temporary stage structure

Angled parking along Hood Street for retail and events - 17 sp

Town green with space with area for stage and lawn for variety of community event programming

Restrooms

Convert Griffin Street to a pedestrian street as it passes through town green and connects to downtown - can still be accessed by vehicles for emergencies

Lower level access to parking

Dog park near residential

Street parking providing parking for event facility and town green

Small park space with area for pond feature

Existing brick structure to be repurposed as event and meeting space overlooking park

Rework existing parking as part of plaza expansion to maximize parking

City Hall to be relocated into historic building on plaza

Explore converting street to pedestrian paseo and expanding existing plaza space and creating pedestrian connection between Main Street and new town green

Ground level retail with residential above engaging with green

Connection to new parking and passive park space

Create angled parking along west side of Johnston Street to add retail and event parking - 50 sp

Shared parking deck for retail, events, and residential

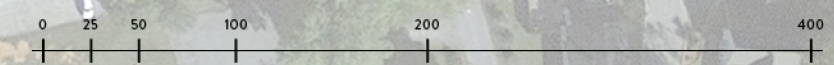
Wide sidewalk along Johnston Street creating multi-use trail connection to town green from Silver Comet Trail to the south

Multi-family residential built into slope of site and wrapping shared parking deck - 275 units

Development Summary

Retail	30,000 sf
Meeting/Event Space	5,600 sf
Residential	275 units

Total Parking	627 sp
On-Street	91 sp
Surface	36 sp
Structured	500 sp



28 OCTOBER 2021